



**MONTIGO**<sup>®</sup>  
the art of fireplaces  
[www.montigo.com](http://www.montigo.com)

*R-Series*  
See Through  
Power Vent  
Linear Fireplace

R-Series R620 ST shown

# R-Series

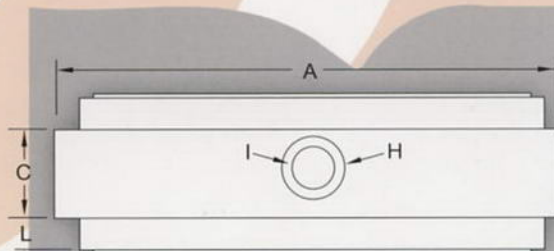
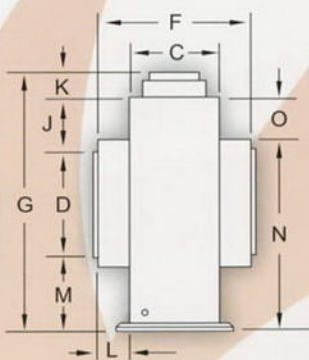
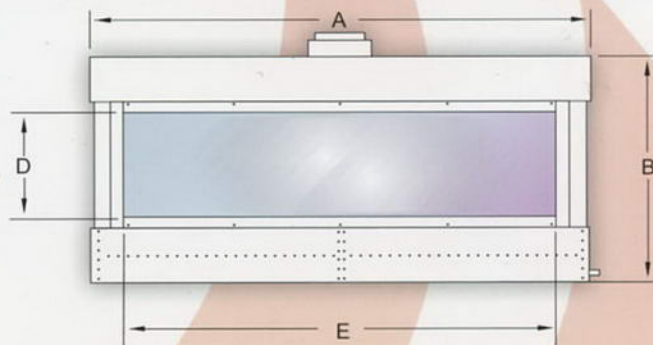


## See Through, Power Vent, Linear Fireplace

### Features:

- Large viewing area for a full view of a spectacular fire
- Unique door design for easy access and cleaning
- Frameless design allows for clean finish around fireplace
- Unique linear burner design and technology
- Contemporary styling to fit your decor
- Select from a wide range of firestone colors to suit any room
- Designed not only with beauty in mind, but also functionality and ease of installation

Unit Dimensions															
	A	B	C	D	E	F	G	H	I	J	K	L	M	N	O
R-Series R320	50 1/2"	43 1/4"	15 1/4"	16 1/4"	37 1/4"	23 1/4"	45 1/2"	8"	5"	12"	2 1/4"	5 1/4"	15 1/4"	33 3/4"	9 1/4"
R-Series R420	62 1/4"	43 1/4"	15 1/4"	16 1/4"	49 1/4"	23 1/4"	45 1/2"	8"	5"	12"	2 1/4"	5 1/4"	15 1/4"	33 3/4"	9 1/4"
R-Series R520	74 1/4"	45 1/4"	15 1/4"	18 1/4"	61 1/4"	23 1/4"	47 1/2"	10"	5"	12"	2 1/4"	5 1/4"	15 1/4"	35 3/4"	9 1/4"
R-Series R620	86 1/4"	45 1/4"	15 1/4"	18 1/4"	73 1/4"	23 1/4"	47 1/2"	10"	5"	12"	2 1/4"	5 1/4"	15 1/4"	35 3/4"	9 1/4"



Model#	Fireplace BTU/H Input			Glass Size [L x H]
	Natural Gas	Liquid Propane		
R-Series R320	45,000	42,000		36" X 16"
R-Series R420	55,000	55,000		48" X 16"
R-Series R520	80,000	80,000		60" X 18"
R-Series R620	100,000	100,000		72" X 18"

Consult the owner's manual for complete installation instructions and proper clearances to combustible surfaces prior to installing fireplace. All specifications, framing dimensions, product designs, materials and colors are subject to change without notice. The actual flame pattern and color may vary slightly from the illustrations. Diagrams and illustrations are not to scale.

**Warranty:** The manufacturer warrants this fireplace to be free from defects in materials and workmanship at the time of manufacture. There is a limited 10 year warranty on the firebox; 5 year limited warranty on the burner and 1 year limited warranty on the pilot burner assembly and fan motors (if included). The valve carries a limited 1 year warranty unless otherwise specified in the installation manual. Glass, plated/painted finishes and refractory lining are exempt.

**MONTIGO**<sup>®</sup>  
the art of fireplaces

www.montigo.com

Ferndale, Washington  
TF 1.800.789.6236  
FX 1.866.300.0927

Langley, British Columbia  
TF 1.800.378.3115  
FX 1.604.607.6462

Available at:

Printed in Canada



P/N XB2204

0517